



TWO-POST HEAVY-DUTY LIFTS

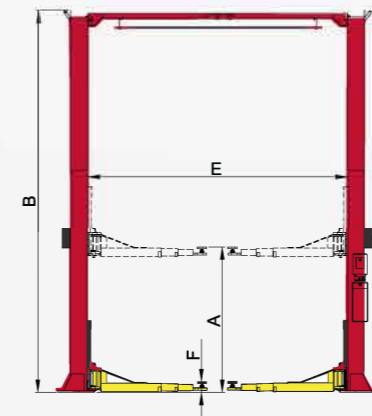
Bear Heavy-duty two post lifts are the best choice for heavy-duty vehicles or trucks in commercial shops... stronger and higher!



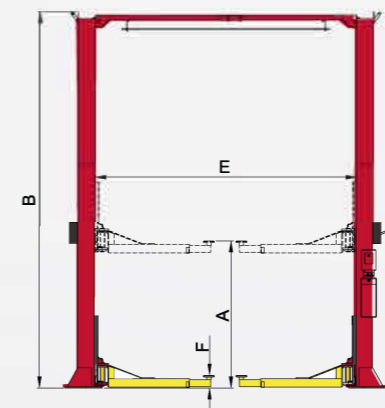
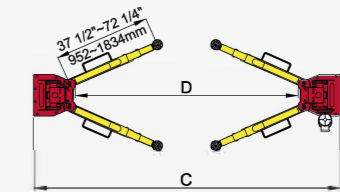
30-21200
30-21500

SPECIFICATIONS

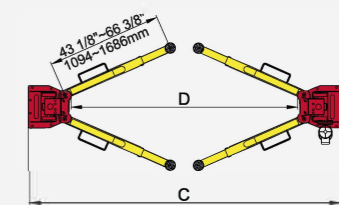
Model		30-21200	30-21500
Lifting Capacity		12,000lbs (5500kg)	15,000lbs (6800kg)
Lifting Time		69S	84S
Lifting Height	A	72 1/2" ~ 81 1/2" (1842~2071mm)	75 1/4" ~ 84 1/4" (1912~2141mm)
Overall Height	B	174"/198"(4420 / 5029mm)	174"/198"(4420 / 5029mm)
Overall Width	C	150 3/4" (3829mm)	150 3/4" (3829mm)
Drive-Thru Clearance	D	109 3/4" (2787mm)	109 3/4" (2787mm)
Width Between Columns	E	123 1/2" (3137mm)	123 1/2" (3137mm)
Minimum Pad Height	F	4 1/2" (115mm)	7 1/4" (185mm)
Motor		2.0HP,220V/60Hz,single phase	
Gross Weight		2,355lbs (1068kg)	2,615lbs (1186kg)



30-21200



30-21500



The Cartek Group
6950 East N Avenue Kalamazoo, MI USA 49048 ph: 866-550-1134
email: customerservice@cartek.com
www.bear-cartek.com

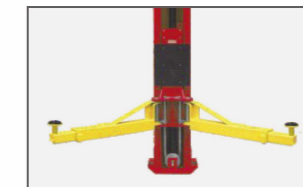
TWO-POST HEAVY-DUTY LIFTS

Bear Two Post Lifts are manufactured no high quality standards using critical material, advance features and innovated technology.

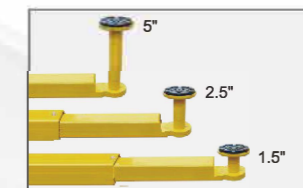
- ✓ Single-point safety release;
- ✓ Overhead safety shut-off device;
- ✓ Direct drive cylinder design, without chains and other drive parts;
- ✓ Dual hydraulic direct-drive cylinders, designed and made on high standards;
- ✓ Self-lubricating UHMW Polyethylene sliders and bronze bush;
- ✓ Adjustable two height setting accommodate varying. service ceiling heights.
- ✓ Automatic arms restraints;
- ✓ Detachable foot guard and tool tray.



Three-stages Arms
The OH-12 with 4 three-stages arms allowing to lift the trucks from short to long wheel base.



Two-stages Arms
The OH-15 is designed with 4 two-stages arms. it is stronger for heavy-duty trucks.

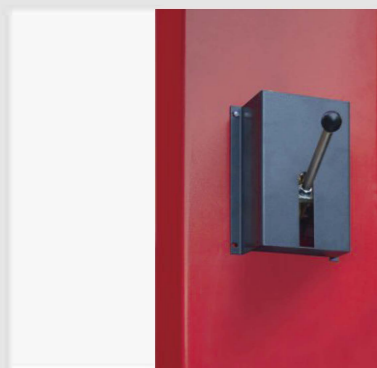


Standard drop-in adaptors
1.5", 2.5" & 5" extension high adaptors to fit different trucks and lifting height.



Saddle adapter (Optional)
Perfect choice for wide size SUV vehicles light trucks and heavy-duty trucks.
Kits No.:20802(suv and light trucks)
Kits No.:21103(heavy-duty trucks)

FEATURES



- Single point safety release makes it easier for operators to unlock both columns locks from one column.



- Lifting arms lock automatic release device, high strength gear rack, more stable and reliable.



- Optional 24V LED lights for clear floor 2-post lift: Kits 40101001 plus extension cable 201128



- The Optional Base Plate Kits No.21501, Including extension frames, and 14 pcs of standard Anchor Bolts.

LESS MAINTENANCE, MORE RELIABLE

OH-12 and OH-15 Two post lift are the new products developed by Bear for heavy duty purpose with a lifting capacity up to 12,000lbs and 15,000lbs. Heavy-duty construction, self-lubricating bush, sliders and high quality parts to make the lifts with almost no maintenance required.

The warranty time of the lifts:
5 years for steel construction, 3 years for hydraulic parts, and 2 years for electrical components.